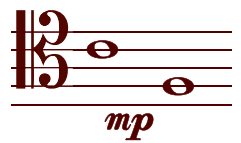


# THE BANISHMENT OF RHYME AND REASON

JEFFREY BERNSTEIN  
(ASCAP)



C F M P

COPYRIGHT © 2005 CORDUROY FIFTHS MUSIC PUBLISHING (ASCAP)

# THE BANISHMENT OF RHYME AND REASON

text and music by JEFFREY BERNSTEIN (ASCAP)

We are Rhyme and Reason,  
 Long since cast aside and out of season.  
 An age ago in Spring  
 We enlightened everything.

But now we drift in Autumn's chill,  
 Ignored by human will,  
 Plenipotentiaries of perfection  
 Awaiting resurrection.

Reason I am.  
 With Reason you became  
 Prometheus, the pirate of the flame.

With the engine of deduction  
 You achieved the soul's construction,  
 Locomotion, irrigation, erudition and salvation.

Reason is the spirit's light and flight.  
 Since I left, the human soul  
 Has languished in its longest night.

I am Rhyme.  
 Inexplicable and sweet,  
 I make complete  
 The heart, and full the time.

There is no life I cannot leaven.  
 Pure delight,  
 I am the muses' sprite  
 And mortals' nearest glimpse of heaven.

The world is cruel and bland without my smile.  
 In this mean sport  
 Life is long, but art is short,  
 And never shall endeavor seem worthwhile.

We are Rhyme and Reason.  
 Ages we have slumbered  
 While mankind has lumbered  
 Through its own artistic treason.

Now is the time.  
 Reignite the world's spark,  
 Break the desultory dark,  
 Ring a brighter chime,  
 Reinstat Reason and Rhyme.

# ONE

♩ = 48

**SOPRANO**  
*ff* 2 3 4 5 6 7  
 We are Rhyme and Rea - son, Long since cast a - side and out of

**MEZZO**  
*ff*  
 We are Rhyme and Rea - son, Long since cast a - side and out of

**PIANO**  
*ff*

8 9 10 11 12  
 sea - son. An age\_ a-go, *mp* an age\_ a - go, an age a -

sea - son. An age a-go, *mp* an age a-go

*p*

13 14 15 16 *p* 17

go in Spring We en-light-ened ev-ery thing. But now we drift in Au-tumn's chill, Ig -

go in Spring We en-light-ened ev-ery thing. But now we drift in Au-tumn's chill, Ig -

*pp*

*p*

18 19 20

nored by hu - man will. Ple - ni - po - ten - ti - a - ries of per - fec -

nored by hu - man will. Ple - ni - po - ten - ti - a - ries of per - fec -

21 22 23 24 25 26

tion A - wait - ing wait - ing re - sur - rec - tion.

tion A - wait - ing wait - ing re sur - rec - tion.

# TWO

♩ = 152

MEZZO

2 3 4

Rea - son I am

*mp*

PIANO

*mp*

5 6 7 8

With rea - son you be - came

Pro - me - the -

9 10 11 12

us, the pi - rate of the flame.

13 14 15

With the en - gine of de - duc - tion

You a - chieved the soul's con -

16 17 18 19

struc - tion, \_\_\_\_\_ Lo - co - mo - tion, ir - rig - a - tion, er - u - di - tion

20 21 22 23

and sal - va \_\_\_\_\_

24 25 26 27

\_\_\_\_\_ tion. \_\_\_\_\_ Rea - son is \_\_\_\_\_ the spi - rit's light \_\_\_\_\_ and \_\_\_\_\_

28 29 30

\_\_\_\_\_ flight. \_\_\_\_\_ Since I left

31 32 33 34

the hu - man soul \_\_\_\_\_ Has lan - guished,

35 36 37 38

*p* Has lan-guished in its long - est night, \_\_\_\_\_ Has lan-guished in its long - est

39 40 41 42 43 44

night. Has lan - guished in its long - est night. \_\_\_\_\_

*pp*

# THREE

♩ = 45

SOPRANO

PIANO

*mp*

*p*

2 3

I am Rhyme. In - ex - plic - a - ble

4 5 6

and sweet, I make com - plete the

7 8 9

heart, and full the

10 11 12

time, full



13 14 15

the time. There is no life I

16 17 18

can - not leav - en. Pure de - light, I am the muse -

19 20 21

- s' sprite And mor - tals near - est glimpse of

22 23 24

hea - ven. The world is cruel and bland with-out my

25 26 27

smile. In this mean sport life is long.

28 29 30

31 32 33 34

but art is short. so short.

35 36 37

Ne - ver shall en-dea - vor

38 39 40 41 42

seem. worth - while.

*dolce*

FOR PERUSAL USE ONLY

## FOUR

♩ = 60

2 3 4

SOPRANO

MEZZO

PIANO

*f*

*mf*

We are Rhyme and

We are Rhyme and

5 6 7 8

Rea - son\_ A - ges\_ we have slum - bered\_ While man-kind has

Rea - son\_ A - ges\_ we have slum - bered\_ While man-kind has

9 10 11 12

lum - bered\_ through its own ar - tis - tic trea - son\_

lum - bered\_ through ar - tis - tic trea - son.

♩ = 52

13 14 15 16

Now is the time Re - ig - nite the world's spark,

Now is the time Re - ig - nite the spark,

*p*

17 18 19 20 21

Break the des - ul - tor - y dark Ring

Break the des - ul - tor - y dark Ring

*ff*

22 23 24 25 26

a bright - er chime, Re - in - *mp*

a bright - er chime,

*fff* *p*

27 28 29 30

state Rea - son and Rhyme, Rea - son and Rhyme, Rea - son and Rhyme,

*mp* Re - in - state Rea - son and Rhyme, Rea - son and Rhyme, Rea - son and

This system contains measures 27 through 30. It features a vocal line with lyrics, a piano accompaniment, and a grand staff. The lyrics are: "state Rea - son and Rhyme, Rea - son and Rhyme, Rea - son and Rhyme," in measure 27; "Re - in - state Rea - son and Rhyme, Rea - son and Rhyme, Rea - son and" in measure 28; "Rea - son and Rhyme, Rea - son and Rhyme, Rea - son and Rhyme," in measure 29; and "Rhyme, Rea - son and Rhyme, Rea - son and Rhyme, Rea - son and Rhyme, Rea - son" in measure 30. A piano dynamic marking *mp* is present in measure 28.

31 32 33 34

Rea - son and Rhyme, Rea - son and Rhyme, Rea - son and Rhyme,

Rhyme, Rea - son and Rhyme, Rea - son and Rhyme, Rea - son and Rhyme, Rea - son

This system contains measures 31 through 34. The lyrics are: "Rea - son and Rhyme, Rea - son and Rhyme, Rea - son and Rhyme," in measure 31; "Rhyme, Rea - son and Rhyme, Rea - son and Rhyme, Rea - son and Rhyme, Rea - son" in measure 32; "Rea - son and Rhyme, Rea - son and Rhyme, Rea - son and Rhyme," in measure 33; and "Rhyme, Rea - son and Rhyme, Rea - son and Rhyme, Rea - son and Rhyme, Rea - son" in measure 34.

35 36 37 38 39 40 41

Rhyme, Rhyme, Rhyme, Rhyme.

*p* and Rhyme, *p* Rea - son, Rea - son, Rea - son.

This system contains measures 35 through 41. The lyrics are: "Rhyme, Rhyme, Rhyme, Rhyme." in measure 35; "and Rhyme, Rea - son, Rea - son, Rea - son." in measure 36; "Rea - son, Rea - son, Rea - son." in measure 37; "Rea - son, Rea - son, Rea - son." in measure 38; "Rea - son, Rea - son, Rea - son." in measure 39; and "Rea - son, Rea - son, Rea - son." in measure 40. A piano dynamic marking *p* is present in measure 36. Measure 41 is a whole rest.